



Technical Data Sheet

ACS Material Molecular Sieve ZSM-48

Table of Contents

[1 – Characterizations](#)

Contact Information:

Manufacturer: ACS Material, LLC.

Address: 959 E Walnut St. Suite 100

Pasadena, CA 91106, USA

Phone: (866)-227-0656

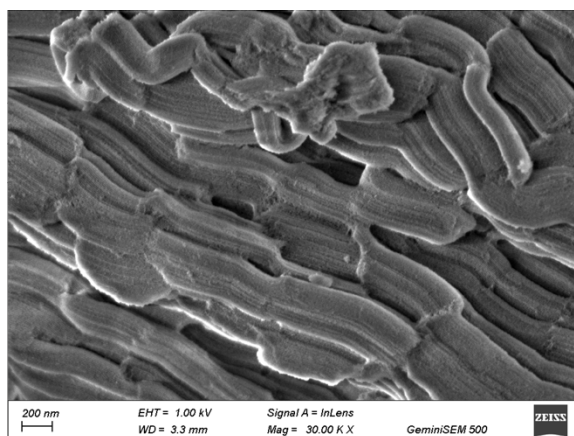
Fax: (781)-518-0284

E-Mail: contact@acsmaterial.com

Revision: 082724

1. Characterizations

Product	ZSM-48
Appearance	White powder
SiO₂/Al₂O₃ Molar Ratio:	109
Na₂O%:	0.06
Crystallinity (%):	95
BET surface area (m²/g):	202
LOI (%m/m):	2.5



Typical SEM Image of ACS Material ZSM-48

Disclaimer: ACS Material, LLC believes that the information in this Technical Data Sheet is accurate and represents the best and most current information available to us. ACS Material makes no representations or warranties either express or implied, regarding the suitability of the material for any purpose or the accuracy of the information contained within this document. Accordingly, ACS Material will not be responsible for damages resulting from use of or reliance upon this information.