



## ACS Material Equipment Series

# PressPro™ Automatic Powder Press Machine

*(EPPPE Series)*

- 1 – Product Composition
- 2 – Product Introduction
- 3 – Product Specifications

**Contact Information:**

ACS Material, LLC

Address: 959 E Walnut St., Suite 100

Pasadena, CA 91106, USA

Phone: (866) 227-0656

Fax: (781) 518-0284

E-Mail: [contact@acsmaterial.com](mailto:contact@acsmaterial.com)

Revision: 071824

## I. Product Composition

- 1) Main Machine
- 2) Control Box
- 3) Mold – Optional and customizable, not included.



Photo of Tablet Press Machine

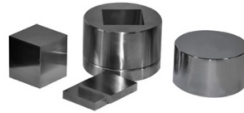


Photo of Optional Mold

## II. Product Introduction

The advantages of the machine are its large pressure, large space, and strong operability. It features a split structure, 7-inch touch LCD screen, and an automatic program segment control. It is mainly used for large-size mold sample preparation under large pressure. The entire series is equipped with a bulletproof glass protective cover as standard, which is safe and secure in operation and production.

## III. Product Specifications

Product Name	PressPro™ Automatic Powder Press Machine			
Model	EPPPE65T	EPPPE100	EPPPE150	EPPPE200
Pressure Range	0.5-65T/0.1t	1-100T/0.1t	3-150T/0.1t	3-200T/0.1t
Hydraulic Cylinder Diameter	Φ160mm	Φ200mm	Φ250mm	Φ290mm
Max Cylinder Stroke	<50mm			

Pressurization Method	Auto-pressurization/ Gradual pressurization			
Sample Pressure Process	Automatic pressurization - Automatic pressure holding - Precise pressure compensation - Timed pressure relief			
Pressurization Stages	5 segments			
Pressure Holding Time	Unlimited seconds, configurable per stage			
Control Interface	XNNETS 7-inch touch LCD screen (remote control optional)			
Touchscreen Functions	Pressure system—Data management system			
Mold Pressure Conversion	Real-time automatic calculation of sample pressure (MPa)			
Demolding Pressure	Configurable (T)			
Hydraulic Cylinder Limit Protection	Automatic pressure relief when the cylinder rises and touches the limit switch			
System Safety Configuration	Automatic pressure relief when the system pressure exceeds the safe value			
Safety Configuration	Bulletproof glass protective door + Leakage protection + Emergency stop switch			
Power Supply	220V (50Hz/60Hz)			
Maximum Power	700W			
Workspaces	width 220×220mm	width 260×230mm	width 280×240mm	width 350×300mm
Overall Dimensions	330×420×680mm	380×520×730mm	420×600×1000mm	480×600×1050mm
Control Box Size	280×400×400mm	350×500×480mm		
Weight	260kg	400kg	675kg	780kg
Configuration Description	1 main machine, 1 control box! Mold optional! Tablet presses or molds can be customized upon requirements			

**Disclaimer:** ACS Material, LLC believes that the information in this Technical Data Sheet is accurate and represents the best and most current information available to us. ACS Material makes no representations or warranties either express or implied, regarding the suitability of the material for any purpose or the accuracy of the information contained within this document. Accordingly, ACS Material will not be responsible for damages resulting from use of or reliance upon this information.